

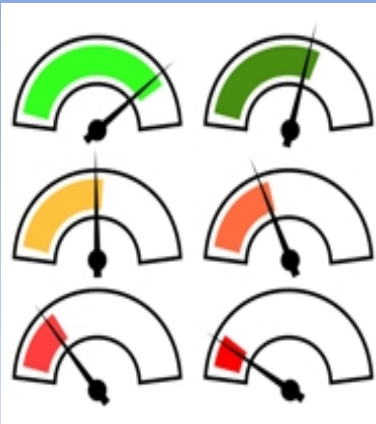
# Retail Compliance Tracker™

## Multiple Sites. Multiple Jurisdictions.

**Retail Compliance Tracker™** is an enterprise solution for environmental compliance tracking. It is environmental compliance tracking software that provides corporate compliance teams an easy, web-based and cost effective system for tracking environmental compliance across multiple sites, operations and jurisdictions.

## Advanced Functionalities. User Friendly.

**Retail Compliance Tracker™** is a complete solution for retail environmental compliance tracking. It has advanced features and enhanced functionalities. The workgroups and multi-media features provide immediate detailed site information, permits, inspection data, reporting, responsive actions, photos, audio, video media for the review of members of your team. Our Enterprise Edition also allows **third-party access settings** to expand your workgroups to contractors and consultants. If your company requires a user-friendly, cost effective web-based solution, Retail Compliance Tracker™ is it.



*Powerful Dashboard  
Analytics*

**"When you can't get ahead of the crisis of the day, Retail Compliance Tracker helps you manage the day-to-day and get ahead of the problems that keep you up at night."**

- Asset, Permit, Renewal & Inspection Tracking
- Built-in & Customized Task Lists
- Automatic Email, Report & Distribution
- Workgroup Sharing Solutions
- Unlimited User Access Levels
- Built-in and Customized Inspection Questionnaires
- Customized Action Lists
- Automatic Email, Report & Distribution
- Online Work Authorization
- Unlimited Third Party Access
- Inspection Frequency Control
- Unlimited Document Attachments
- SSL Security True 128-bit Encryption
- Daily Data Backup & Storage
- Powerful Dashboard Analytics



# Retail Compliance Tracker™

## Built-in Retail Modules.

**Retail Compliance Tracker™** is built to manage retail environmental compliance requirements. While customizable, this environmental compliance tracking software was built for Retail and Logistics to keep your implementation and development costs low. Our built-in modules include:

- **Enforcement Module** tracks agency contacts, inspections, NOVs & fines
- **Tanks Module** manages your petroleum storage tanks and associated permits, registrations, renewals and compliance activities
- **SPCC Module** manages oil Spill, Prevention, Control and Countermeasure plans, on-site inspections, annual plan reviews, 5-year recertification, training
- **Air Module** manages air emissions permits, monitoring, recordkeeping, reporting, renewals for diesel and natural gas combustion units, including emergency generators, fire suppression pump engines, rooftop units, bakery ovens and other emissions sources
- **Wastewater Module** manages pretreatment permits, registrations, monitoring, sampling, maintenance, recordkeeping, reporting, and renewals for wastewater related assets, including grease traps, oil-water separators, septic systems and leachfields, battery washes, lime pits, car & truck washes
- **Stormwater Module** manages monitoring, recordkeeping, reporting, mandatory & voluntary BMPs, such as lot sweeping & clean out of stormwater ponds & structures
- **Water Supply Module** manages permitting, registrations, licenses, monitoring & testing, reporting, for Safe Drinking Water Act Public Water Systems, water wells, water treatment equipment, state and local water use, withdrawal & production permits
- **Hazardous Materials Module** manages inventories and activities (recordkeeping, reporting and renewals) for EPCRA Tier II Reporting & California HMBP/HMI
- **Special Recycling Module** manages storage and recycling permits & registration, reporting and renewals; and storage, signage, inspection, signage and public education requirements for materials with heavily regulated recycling requirements:
  - **Used Oil**
  - **DIY Used Oil** (public collection)
  - **Used Oil Filters**
  - **Used Lead-acid Batteries**
  - **Used Tires**
  - **e-Waste**



*Manage multiple obligations for multiple assets at multiple sites.*

John Storlie  
Principal Consultant  
Managing Member  
John.Storlie@theOSgrp.com  
www.theOSgrp.com

444 21st Street South  
La Crosse, Wisconsin 54601  
608.433-9389

Retail Environmental Solutions™  
a division of  
 The OS Group LLC